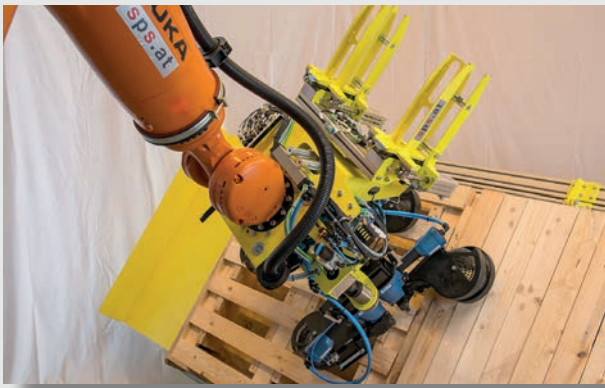


ROBOT CELL FOR NAILING OF WOODEN PALLETS





PRODUCT SPECIFICATION PALLETS

- ▶ sawn timber
- ▶ wooden pallets and boxes
- ▶ wire welded nails BDC nails bright steel
diameter: 2,5 - 3,8 mm, length 30 - 100 mm

TYPE SPECTRUM

- ▶ basically all types of pallets with maximum range of W=3050 x H=1250 x D=190 including templates

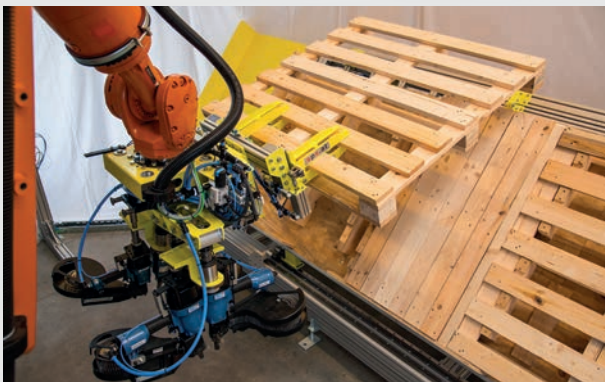


CYCLE TIME

- ▶ per pair of nails max. 2 sec.
- ▶ cycle time depends on the respective pallet type

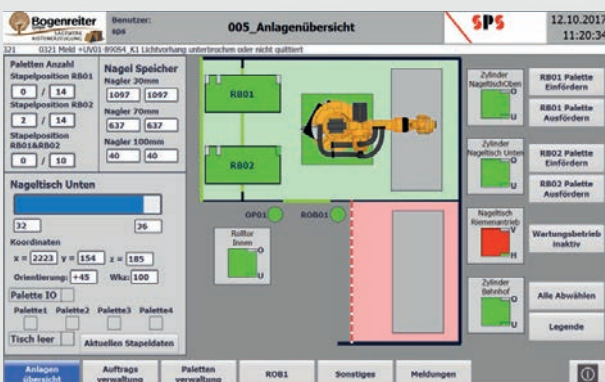
JIG TIMES


- ▶ template change approx. 5min



PROCESS DESCRIPTION

- ▶ the operator inserts the prefabricated individual elements into the template
- ▶ the operator panel is used to start the infeed or nailing cycle
- ▶ the nailing tools must be loaded with nails by the operator at regular intervals
- ▶ the individual components laying on the changing nailing table are nailed together by the robot
- ▶ the nailing table swivels into the removal position
- ▶ the robot picks up the pallets using an in-house designed gripper and stacks them at the two deposit positions on roller conveyors
- ▶ total stack height maximum 1600 mm
- ▶ once both stacking positions are fully loaded, the stacks are transported to the stack removal positions and can be removed by means of a forklift
- ▶ The unloading position is separated from the robot's working area with a rolling door, so that the robot working area cannot be passed during the removal process.



Visit us on  YouTube and see our robot cell in action!

 facebook.com/SPSGruppe

sps.at

SPS Technik Ges.m.b.H.
Gewerbepark 7
4300 St. Valentin / Austria
Tel. +43 (0)7435 / 54048-0

SPS Maschinenbau Ges.m.b.H
Am Nussbaumhof 29
4813 Altmünster / Austria
Tel. +43 (0)7612 / 87432-0

